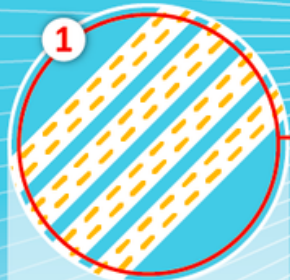
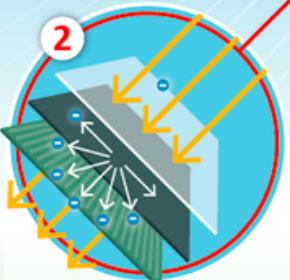


INFOGRAPHIC

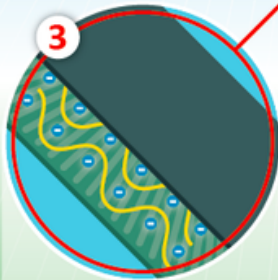
HOW DO SOLAR PANELS WORK?



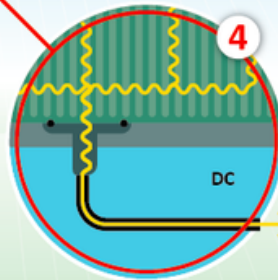
Light from the sun is made up of tiny particles called photons.



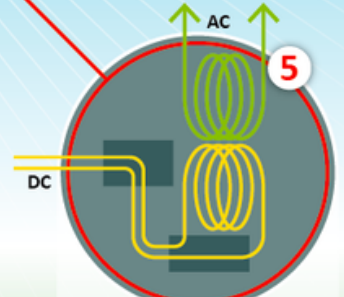
Photons hit the solar panel, knocking electrons free of the silicon atoms within the solar cells.



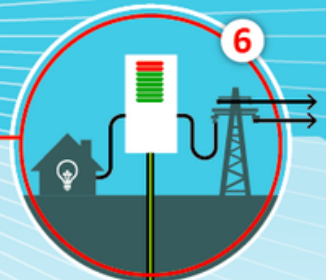
These loose electrons are now free to move, creating an electric current from the positive and negative charges now present. They pass through the layers of the solar cell.



The electric current flows to the edge of the panel into a conductive wire, which leads to the inverter.



The inverter converts the direct current (DC) to alternating current (AC), which is what is used to provide power.



This electricity then transfers to the building. If the solar panels are connected to the utility meter, excess electricity is transferred to the utility grid. This causes the meter to run backward, crediting the property for surplus generation.