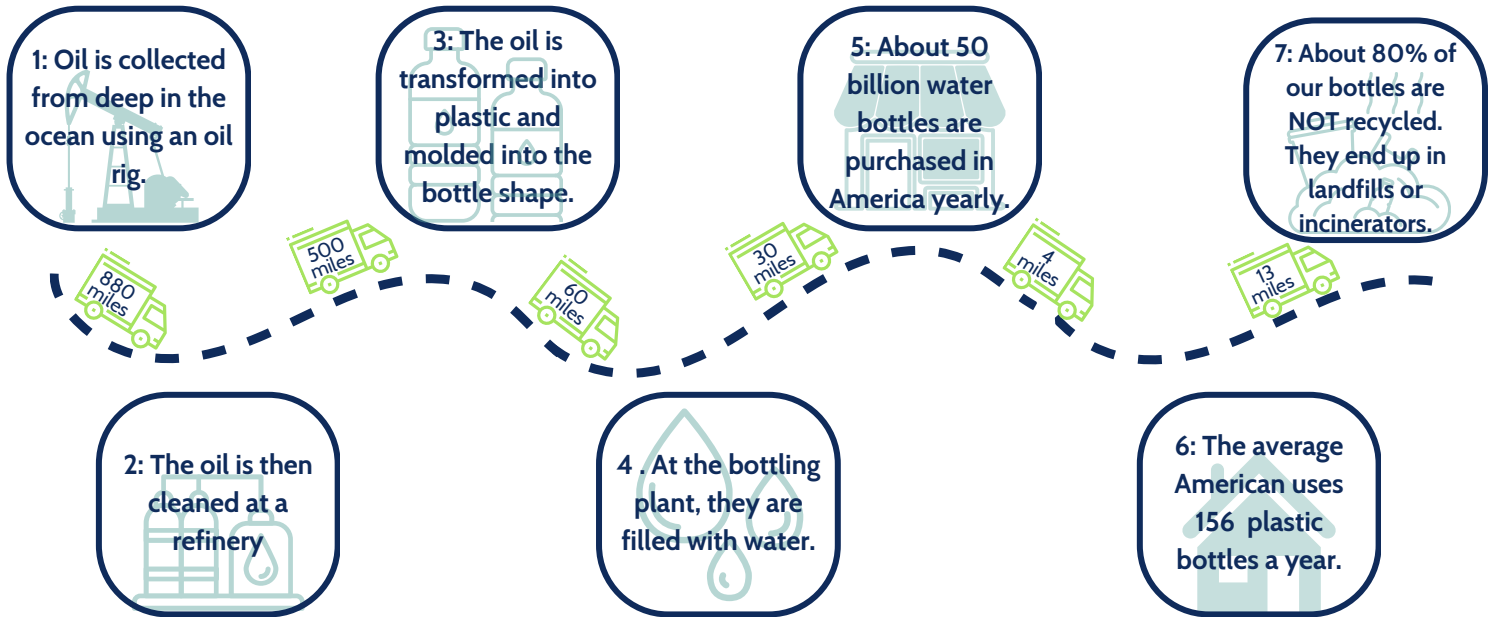


MATH EXTENSION | A PLASTIC BOTTLE'S JOURNEY



Instructions: A plastic water bottle travels many miles throughout its life cycle. Follow the plastic water bottle's journey from an oil rig in Nova Scotia to an incinerator in Saugus in order to answer the following questions!

Question	Show your work!	Answer
How many total miles did the water bottle travel during its life cycle?		
Driving 1 mile releases about 411 grams of carbon dioxide. Using your answer from the first question, calculate how many grams of carbon dioxide were released during the water bottle's journey.		
How many water bottles does a family of 4 use per year? Hint: Use a fact from above.		
How many water bottles are purchased in America in 5 years? Hint: Use a fact from above.		